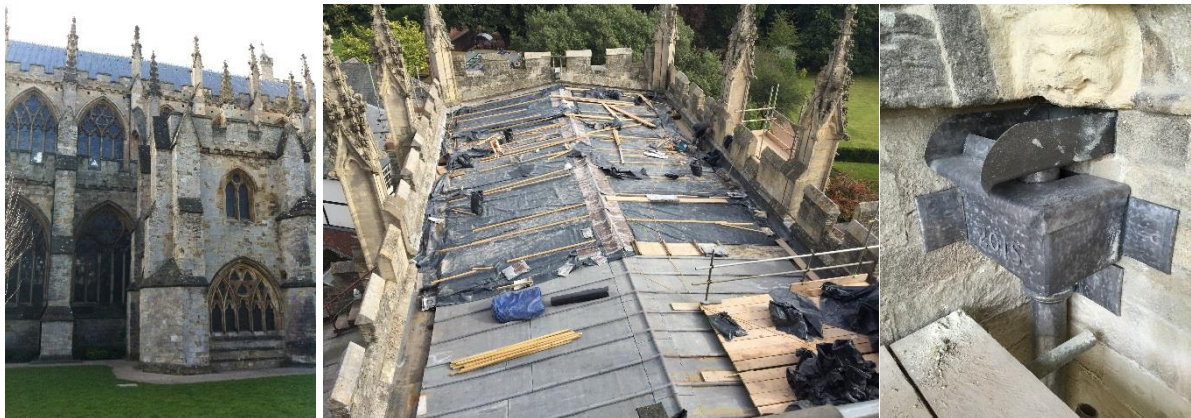


Case Study

Exeter Cathedral

Re-roofing the St Andrew's, St Catherine's and Lady Chapel roofs.

The re-roofing of the Chapels of Exeter Cathedral was made possible with grant from the World War I Cathedral Repair fund.



We carefully removed the existing flat roof structure and associated steel and brick work above the St Andrew and St Catherine chapel while retaining and protecting the chapel ceiling.

The chapel roof was rebuilt with three kingpost trusses, rafters and deal boarding. The roof was finished with code 8 lead sheet with timber roles and parapet gutters.



Scheduled Monument consent was issued for a series of below ground drainage modifications. Existing iron downpipes were repaired and two new downpipes installed in keeping with the originals.

Our conservation stonemasons undertook work to conserve the 14C stonework. Vegetation and concrete coping was removed from the parapets. Six of the Cathedrals' grotesques were gently cleaned with the application of poultices. Stonework was lightly defrassed with a soft brush and open joints were raked out and repointed in an approved mortar mix. The Cathedral's own supply of Salcombe and Beer stone, supplemented with stone from Ellis and Co stores, was sawn and cut to size to restore the profile of the parapets, repair ashlar facework, internal tracery, mullions and cills. Three sections of decayed Salcombe stone were replaced in the intricate Clerestory window tracery.



The medieval clerestory window was also subject of a conservation research project. After the stained glass had been cleaned and conserved, a single supplementary light of protective glazing was installed in a trial area to establish the effectiveness of its protection from condensation, and the aesthetics of different glazing treatments using horticultural glass sheet, bronze t-bars and leaded samples following the line of the medieval lead.

The cathedral is a busy public space and remained open throughout the works, so care was taken to ensure public safety and to minimise noise, dust and the visual impact of the internal scaffold. The site was registered with the Considerate Contractors Scheme.