

St. Giles House

Wimborne St. Giles, Dorset



Craftsmen in the
Conservation of
Historic Buildings

Joinery



Woodwork throughout St Giles House had been subject to dry rot and damp from leaking roofs. Substantial repairs were made. A new roof was laid, and structural repairs to the supporting timbers and beams made the house secure. Where possible doors and windows were repaired in favour of replacement, and where replacements were required these were constructed by Ellis and Co conservation craftsmen to blend with original features.

In the lower floors the numerous sash windows and doors were restored. New casements were built new in line with building regulations. Boxing and seals were repaired where ever possible or where necessary replaced. The new windows and doors of the loggia and apartment have been built to replicate features in the original house. The top floor dormer windows also had to be replaced.



Internally, underfloor heating has been laid in the White Room and Loggia and under reclaimed oak floors. Throughout the old building oak floors have been laid with original boards recovered from unused areas of the house blended seamlessly with new replacement boards. Extensive dry rot and wet damage has been removed and wood panelling, integrated with 17th Century decorative plasterwork, has been restored to create a warm and elegant interior.



The Grade II listed parkland surrounding St Giles House includes two bridges also restored by Ellis and Co. Oak sleepers laid on a steelwork structure provide a firm base. The balustrades are 60% reused or repaired, and 40% are new additions carved in oak by Ellis and Co. craftsmen.

St. Giles House

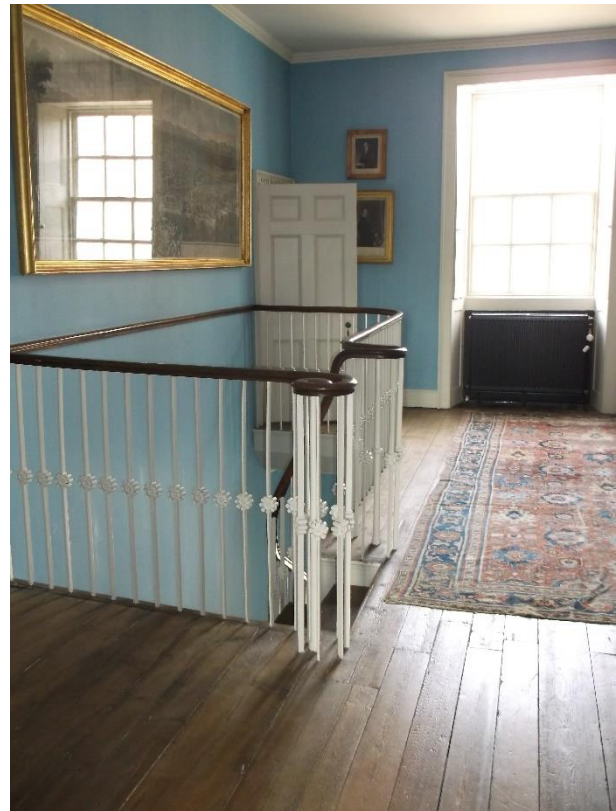
Wimborne St. Giles, Dorset

Flooring

Underfloor ground source heating was laid under the main rooms of the house. In the new Loggia marble flooring is used in the entrance to the House. Throughout the rest of the House oak flooring predominates.

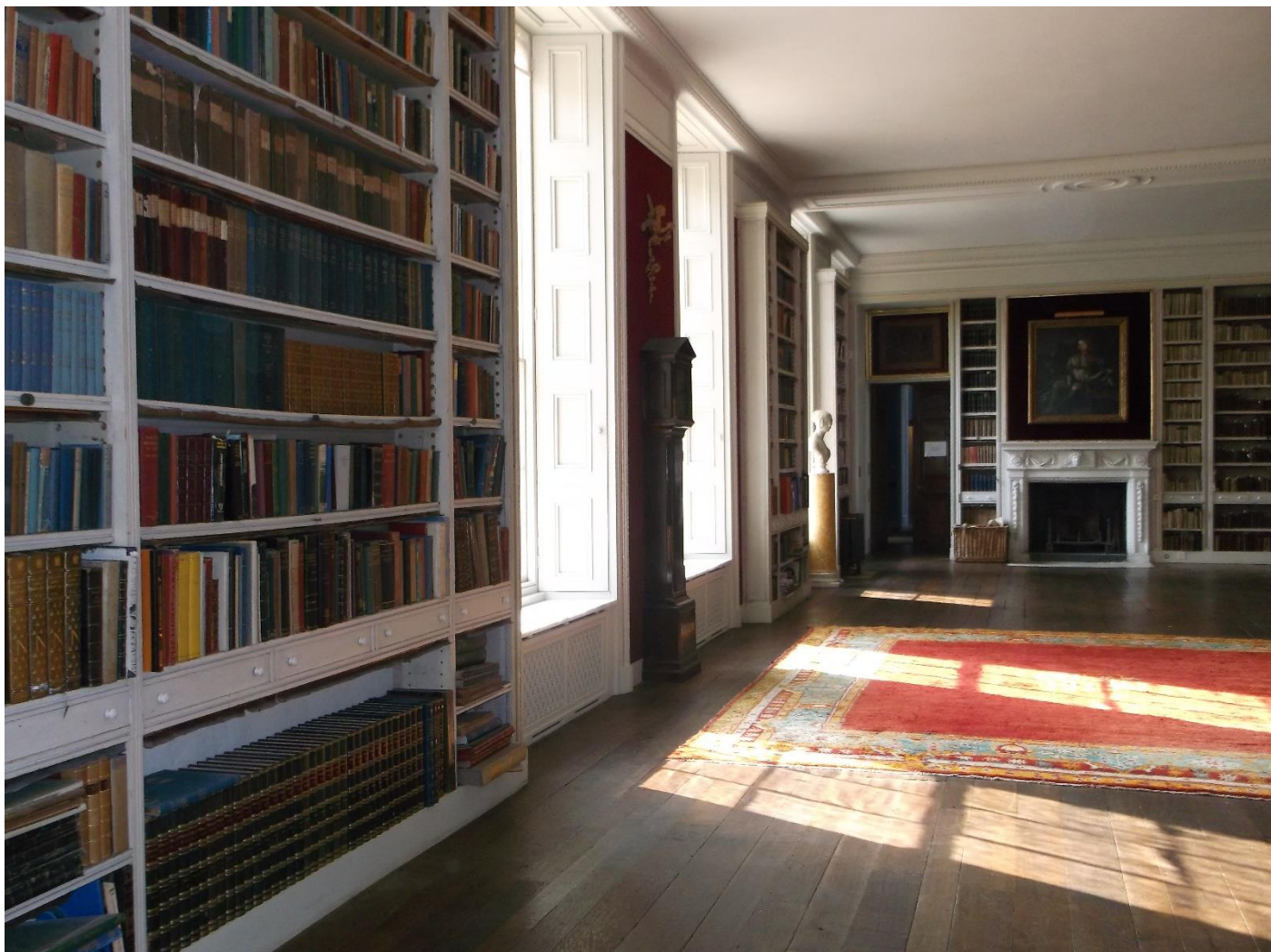
Extensive water damage and dry rot was repaired. Where possible the floor of the main rooms has been constructed with reclaimed wood materials from the house cleverly blended in size, shape, texture and colour, and surfaced and stained to give a clean contemporary finish to original 17th Century floors.

In the beautiful tapestry room underfloor heating is effective in providing ambient warmth through a reclaimed oak floor. Throughout the House floor boards were recovered from the demolished wings, and upper floors, restored and reused. In the stunning White Room 70% of the original floorboards were repaired and re-laid in combination with recycled boards selected and stained to match the originals. Our carpenters prepared and laid the floor, blending new and old boards seamlessly. In the new apartment the floor has been stained for a consistent and sympathetic look throughout.



Picture 1: The vertical boards and panelling mark the boundary between the new loggia and the existing building.

Picture 2: Lord Shaftesbury's newly built apartment blending reclaimed oak floorboards with new oak replacements.



The reclaimed oak floor provides a tranquil warmth in the library which, once abandoned, is now glorious and a fitting tribute to the philosophical heritage of St Giles House.